

The logo for aluplast, featuring the brand name in white lowercase letters on a red rectangular background. The background of the entire page is a close-up photograph of window frames, showing a light-colored wood-grain finish on the left and a dark grey or black finish on the right.

aluplast®

aluplast® - Specialist for window and door systems

neo product family

www.aluplast.net



neo as formula for success

In a very short time, we at aluplast have developed our new system **energeto® neo** and introduced it to the market. Especially in recent months, we have been able to convince many window manufacturers of our combination of design, compatibility and adhesive technology and win them as energeto® neo customers.

The very successful introduction of **energeto neo** has prompted us to continue thinking about the window of the future. The insights we gained during the development of energeto neo play a central role as principles for our further development work :

- Design: slim profile views
- Lean product portfolio
- Maximum compatibility between systems (especially in the area of accessories)
- bonding ready: all profiles are designed for the use of our bonding technology and our new adhesive
- Modern and timeless surfaces
- Added value for the processor
- Zero-waste policy as target for 2026





for the future

On the outside, the slim frames leaf combination look very elegant and integrate perfectly into any house shape. Especially in the interior view, the slim profile views are extremely important:

The incidence of light is increased -we have all noticed that daylight is extremely important, and not only in the pandemic . We need light to live well. But the view outside is also becoming more and more important - we know from studies that the interior is increasingly dispensing with curtains and drapes, so the window profile is gaining in importance.

The world around us is becoming more and more complex. Complexity is difficult to manage. This is where we come in with our development approach: Complexity must be reduced. The overview plans are much slimmer than before. Compatibility, which has always been our focus,

also helps us here. During development in recent months, we have paid great attention to the fact that different accessories can be used in different product categories.

Our technologies, the modern and timeless surfaces and the focus on the product window profile round off our differentiation portfolio for you.

Use our neo platform to remain successful on the market in the long term.





bonding inside A strong bond

As a pioneer in window bonding technology,
we have the most experience in the industry.

It is not for nothing that the adhesive technology is inseparably linked with aluplast for many fabricators. Since 2007, we have been the driver in the industry for bonded window constructions.

The advantages were as obvious then as they are now: the adhesive creates an extremely strong bond between the pane and the sash. By this means, the high weight of the pane no longer rests on single glazing blocks but is distributed over the entire bonding surface. This prevents sinking of the sash so that no further maintenance for the fitter is required.

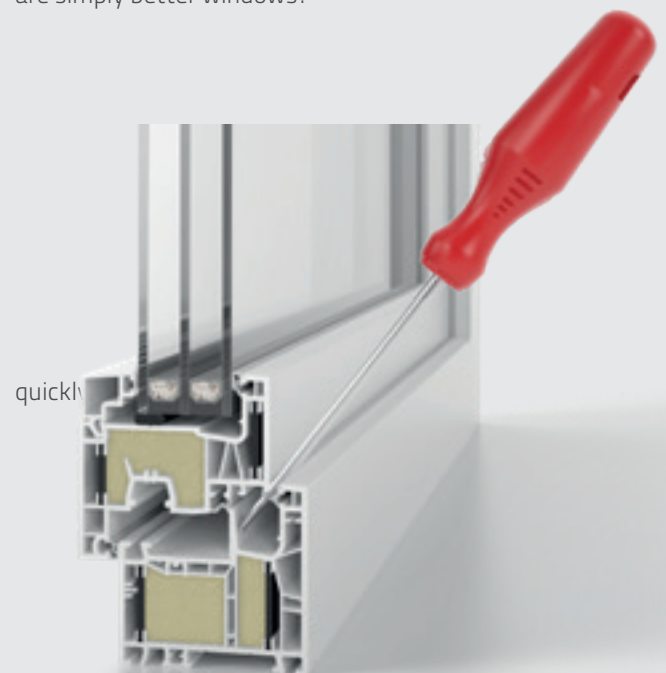
But that's not all: The gluing of the pane provides greater stability of the complete profile at the same time. When this method is used, there is at least in standard sizes there is no need for additional steel reinforcement inside the profile. In addition, the absence of steel eliminates the well-known thermal bridge and makes better thermal insulation values possible. Another advantage for the fitter: The profiles are up to 60% lighter without steel.

We want to help spread these advantages further in the market, because bonded windows are simply better windows!

safetec inside

A smart way to thwart
attempted break-ins

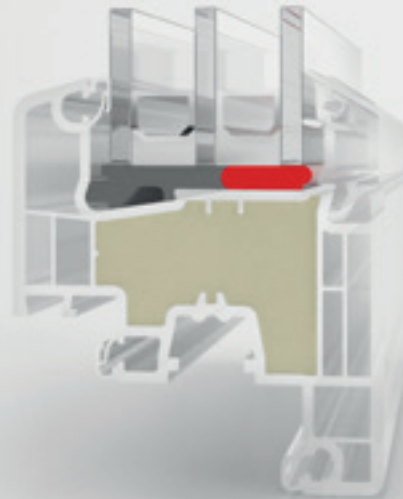
As a third gasket in the window frame, the fixed central web running all around ensures improved thermal insulation values on the one hand and prevents the sash from being levered open



foam inside

Window technology at its best

Impressive insulation values are made possible by foam inside technology. The profile chambers are filled with special polyurethane foam. The trick here: The material is injected into the frame after the welding process. The foam has the special property to cover long stretches through the profile by itself. Due to the expanding foam, the hollow chambers of the window frame are filled completely, up to the corners. The exact filling quantity is calculated by a software provided by aluplast. foam inside is completely recyclable, because unlike common construction foam, it does not stick to the other profile materials.



powerdur[®] inside

For the best heat insulation



Reduce steel to a minimum or even eliminate it altogether - In cooperation with BASF, a special glass-fibre reinforced material was developed that provides the necessary stability inside the profiles and makes additional steel reinforcement unnecessary. Significantly better insulation values are achieved with powerdur, which is inserted directly into the profile at the factory.

The profiles are 100 percent recyclable. In state-of-the-art aluplast recycling plants, the granulated PVC can be separated accurately from the powerdur material and fed back into the production cycle several times. We are also a founding member of Rewindo, the recycling initiative of German uPVC profile manufacturers for removed windows, roller shutters and doors made of uPVC.



energeto[®] neo

energeto[®] neo is characterised by extremely slim profile elevations and thus picks up on current design trends. There is a recessed version, which gives the window more space, and a flush, closed version. It gives the room a uniform, cohesive look.

Compatibility and compatibility were at the forefront of the new development. That is why energeto[®] neo is just as suitable for large properties as it is for an architect's house. The innovative aluplast technologies guarantee you thermal insulation, burglary protection and ease of use at the highest level.

DESIGN MEETS TECHNOLOGY

energeto[®] neo

- $U_f = 1.00 \text{ W/m}^2\text{K}$
- $U_w = 0.73 \text{ W/m}^2\text{K}$ best possible option¹⁾
- woodec and aludec as standard lamination
- powerdur inside
- bonding inside
- Up to RC2 burglary protection
- Recessed version
- optional foam inside



BONDING INSIDE

POWERDUR INSIDE



DESIGN MEETS TECHNOLOGY

IDEAL neo

- $U_f = 1.2 \text{ W/m}^2\text{K}$
- $U_w = 0.79 \text{ W/m}^2\text{K}$ best possible option¹⁾
- woodec and aludec as standard lamination
- Up to RC2 burglary protection
- Recessed version



**THE CLASSIC WINDOW
WITH ADHESIVE OPTION**

¹⁾ with triple glazing with $U_g = 0.5$ and $\Psi_i = 0.030 \text{ W/mK}$

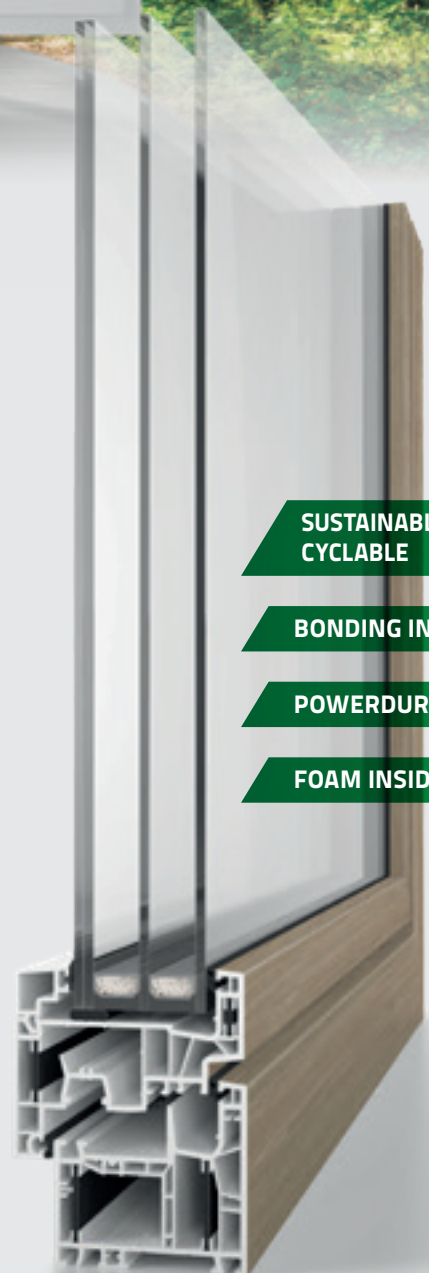


CO₂ footprint

Saving energy, conserving resources, avoiding CO₂: energeto® neo is our resource-efficient system platform that already ensures a better eco-balance during production. With aludec and woodec - a perfect combination for indoors and outdoors! It has never been easier and more resource-saving to manufacture a uPVC window in wood/aluminium look!

energeto® neo

- $U_f = 0.87 \text{ W/m}^2\text{K}$
- $U_w = 0.67 \text{ W/m}^2\text{K}$ best possible option¹⁾
- woodec and aludec as standard lamination
- powerdur inside
- bonding inside
- foam inside in sash and frame
- Up to RC2 burglary protection
- flush version
- Numerous laminations optional
- our technology highlight recyclable



SUSTAINABLE AND RECYCLABLE 

BONDING INSIDE

POWERDUR INSIDE

FOAM INSIDE



DESIGN MEETS TECHNOLOGY

energeto[®] neo

- $U_f = 0.99 \text{ W/m}^2\text{K}$
- $U_w = 0.73 \text{ W/m}^2\text{K}$ best possible option¹⁾
- woodec and aludec as standard lamination
- powerdur inside
- bonding inside
- Up to RC2 burglary protection
- flush version



¹⁾ with triple glazing with $U_g = 0.5$ and $\Psi_i = 0.030 \text{ W/mK}$



neo smart-slide

Simply to feel good

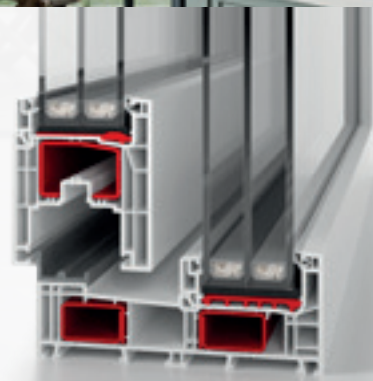
You can now enjoy beautiful views with your new neo smart-slide sliding door. neo smart-slide with its modern cubic design blends in perfectly between the living space and the outdoor area. Large glass surfaces with element formats of up to 6.0 m x 2.5 m grant you a fantastic view of the outside.

But the neo smart-slide sliding door is not only visually outstanding, but also in its operation. Easy sliding, intuitive closing and the convenient self-closing mechanism speak for themselves. low effort meets high tightness.



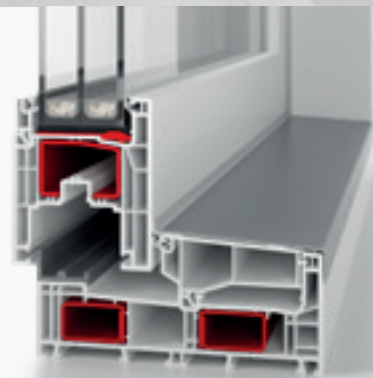
Fixframe - filigree view

The exceptionally narrow profile provides even more light incidence in your living space and thus additional solar heat. neo smart-slide reduces your heating costs and improves your carbon footprint!



Step protection - robust solution

The additional frame profile in the lower area of the door protects the neo smart-slide from scratches, impacts and other effects. The step protection is resistant and easy to clean. This means that the sliding door will look good for years to come.







The smart sliding solution
in a modern cubic design.

DESIGN MEETS TECHNOLOGY

neo smart-slide

- low installation depth of 78 mm or 154 mm
- $U_f = 1.3 \text{ W/m}^2\text{K}$
- Glass and infill thickness in the sash up to 54 mm (2- to 3-fold glass) possible
- System platform energeto® neo
- integrated hardware technology (hardware neutral)
- More safety through additional locking points
- Selection of opening mechanisms: schema A + C
- available in numerous decor variants: woodec, aludec and Farbwelt
- Optional bonding inside (adhesive technology)
- Application: New construction / renovation



aludec surface
jet black matt



woodec

inspired by nature

The woodec surface impresses with its deep grain and pleasant feel - it feels and looks like real wood. The four wood tones from light to dark were inspired by the Scandinavian furnishing style. In the room, the colours provide warmth and cosiness. Outside, they give the house a high-quality look.

Windows as individual as your style

Not only wall paint, furniture and decoration make up the ambience in a house. Increasingly, windows are also becoming an integral part of interior design and spatial planning.

Two main directions determine the design: the natural look of wood and the noble aluminium look. Both trends are taken up by the woodec and aludec surfaces.

An astonishing wood effect and unique feel, together with all the advantages of a uPVC

window: that's what you get with the new woodec window surface. It is not only visually oriented towards the natural material, woodec also feels particularly real and can hardly be distinguished from real wood.

Development and design were influenced by the Scandinavian countries. Lots of wood, simple shapes, straightforward designs and warm colours characterise the Scandinavian furnishing style and make it so popular.



aludec

inspired by style

aludec is characterised by a perfect structure with a sand-matt feel. The surface can hardly be distinguished visually and tangibly from a real powder coating.

The colour palette ranges from white to shades of grey and black. The timeless colours match many different building and furnishing styles - indoors and outdoors.

A perfect combination for indoors and outdoors!



Looks and feels real
Perfect texture and grain that can be seen and felt.



Resource-saving
Saves the resources wood and aluminium and can be 100 percent recycled.



Simple elegance The colours have been carefully selected - Inspired by the Scandinavian interior style.



Scratch-resistant
Up to 10 times more scratch-resistant than a standard decor



Versatile
aludec and woodec can be combined in many colours. They can be used indoors and outdoors.



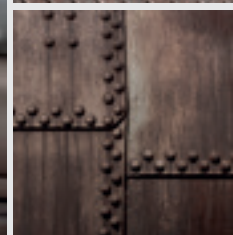
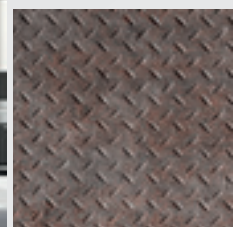
Easy to clean
Easy cleaning of the surfaces - warm water and mild cleaners are enough.

Worlds of colour

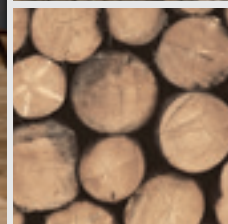
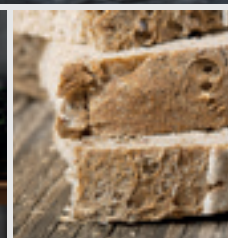
Let yourself be inspired

Modern, minimalist, farmhouse or industrial style. There are many home design styles. With our new resource-efficient system platform energeto® neo, we supply the matching window profiles.

aludec umbra grey



woodtec turner oak malt

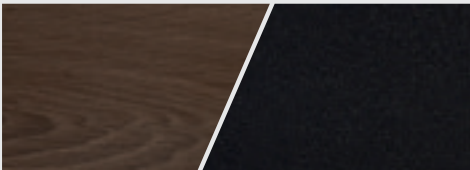

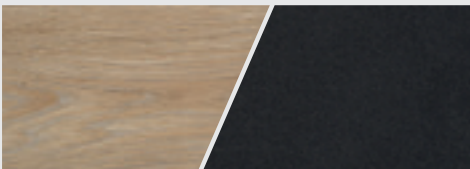

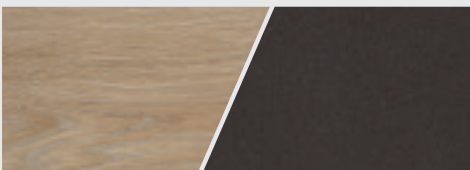







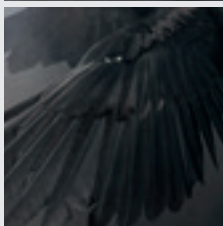
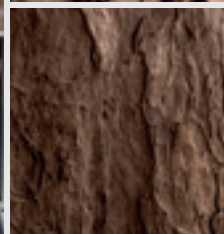
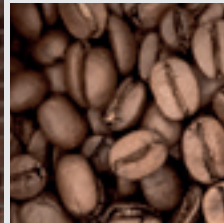
aludec anthracite grey

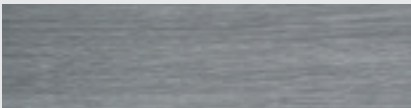

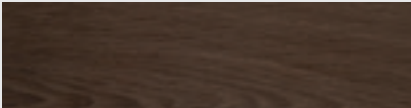











woodec sheffield oak alpine

woodec/aludec	Decor name	ap No.	Colour code	Gasket
	turner oak toffee	-22	470-3004	
	aludec jet black	-04	476-6062	
	turner oak malt	-20	470-3002	
	aludec anthrazitgrau	-03	470-6003	
	turner oak malt	-19	470-3001	
	aludec umbragrau	-12	470-6065	
	aludec verkehrsweiß	-36	470-6030	
	aludec DB703	-07	470-1014	

For detailed delivery conditions, please contact your contact person at aluplast.



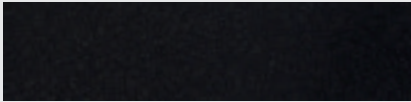

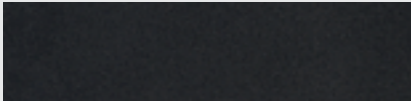



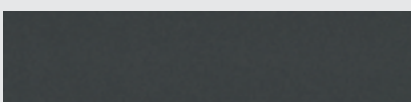

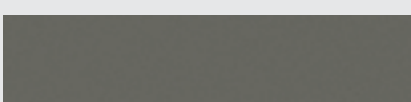



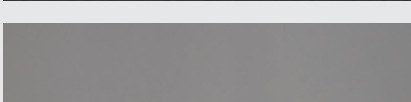

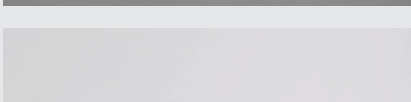
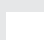
woodec	Decor name	ap No.	Colour code	Gasket
	sheffield oak concrete (shoc) similar to RAL 7012	-21	470-3003	
	turner oak toffee (toto) similar to RAL 8028	-22	470-3004	
	turner oak walnut (tow) similar to RAL RAL 8003	-35	470-9036	
	turner oak amber (toa) similar to RAL RAL 7006	-39	470-9035	
	turner oak malt (tom) similar to RAL 1001	-19	470-3001	
	sheffield oak alpine (shoa) similar to RAL 7044	-20	470-3002	



aludec DB703



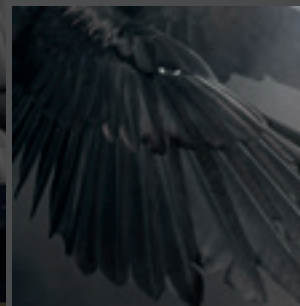
aludec traffic white

aludec	Decor name	ap No.	Colour code	Gasket
	aludec jet black (jbmdc) similar to RAL 9011	-04	476-6062	
	aludec anthracite grey (agdec) similar to RAL 7016	-03	470-6003	
	aludec DB703 (DB703dec) similar to DB703	-07	470-1014	
	aludec basalt grey (bgdec) similar to RAL 7012	-08	470-6048	
	aludec quarz grey (qgdec) similar to RAL 7039	-14	470-6047	
	aludec umbra grey (ugdec) similar to RAL 7022	-12	470-6065	
	aludec window grey (fgdec) similar to RAL 7040	-37	470-6066	
	aludec traffic white (wedec) similar to RAL 9016	-36	470-6030	

For detailed delivery conditions, please contact your contact person at aluplast.



Jet black is the
new black



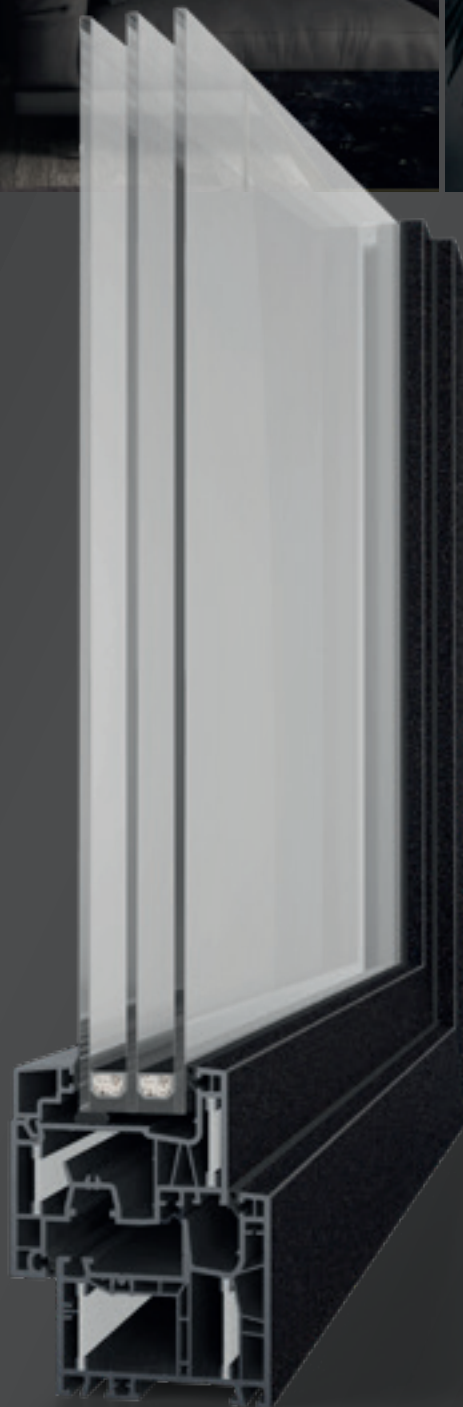
Setting new trends

The little black dress or all black - what has been a classic in fashion for decades is now also becoming increasingly popular in interiors. Monochrome, tone-in-tone living spaces have a relaxing and calming effect.

Black furniture and accessories give rooms a refined and puristic look. It lets other colours shine and yet does not dominate, but remains in the background - simple, plain and cool.

We at aluplast have also taken up this trend for our window profiles. The new and high-quality Jet-Black surface not only suits the monochrome black furnishing trend of Bauhaus-style inspired buildings, but also as a supporting element for large-scale glass façades in urban environments.

The new surface is scratch-resistant and easy to clean. And the patented Cool Colors plus technology prevents heat from being absorbed by the surface due to solar radiation and prevents the profiles from heating up.







aluplast® - Specialist for window and door systems

aluplast GmbH is one of the leading system providers of PVC windows, main entrance doors, roller shutters and controlled domestic ventilation systems. The family-owned company headquartered in Karlsruhe was founded in 1982 by Manfred J. Seitz. Today, aluplast has 10 production sites worldwide and customers in more than 80 countries. With its wide product portfolio, the company offers almost any possible window construction and variation. Its success is based above all on the company's market proximity that always results in pioneering innovations.

Learn more at www.aluplast.net